



PRODUCT CODE:

ICE-403530

This 3monkeez® pre-fabricated ice well is supplied as a complete unit, ready to weld in.

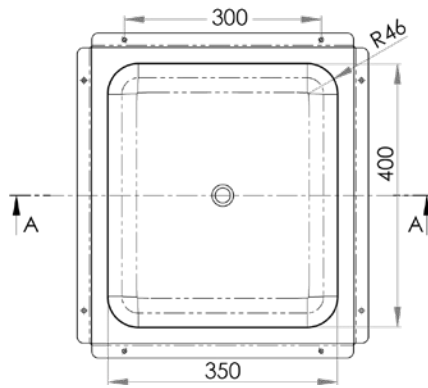
FEATURES & BENEFITS:

- Internal skin - constructed from 1.2mm 304 grade stainless steel
- External skin - constructed from 1.2mm 304 grade stainless steel complete with a flange for fixing
- Radius corners and cross breaks to a 25mm centre waste
- Raw edge ready for welding
- 25mm urethane injected insulation

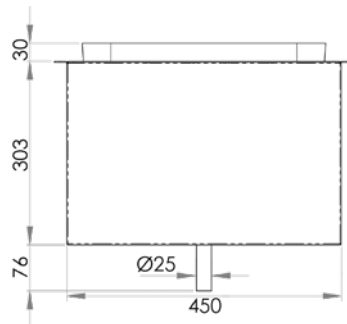
In stock and available for immediate delivery

Custom sizes can be manufactured to your requirements

Top



Side



Cross Section

