

XM

Economy Compact Passthrough Dishwasher – 450mm rack W 650mm x D 650mm x H 1530mm

Washtech's XM is a simple-to-use and easy-to-maintain compact passthrough dishwasher. With one of the industry's lowest water consumption rates along with leading rinse heating, the XM provides excellent wash results in less time, while being light on operating costs and the environment.

The XM features Washtech Hybrid Controls which combine IP67 stainless switches, tried-and-tested switchgear, with a customisable electronic timer.

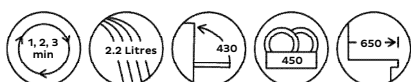
Since 1981 Washtech dishwashers have been constructed from heavy-duty stainless steel, and are engineered specifically for Australian conditions and regulations. Backed by the most extensive service network and spare parts inventory in the region, your Washtech dishwasher will not let you down.

Standard Features

- Autostart on hood closure 1, 2 and 3 minute wash cycles
- Washes up to 840 plates per hour/960 glasses per hour
- Low hot water consumption of 2.2 litres per cycle
- Suitable for install in a bench gap of 510mm
- Suitable for install in benching from 600mm deep
- Washtech Hybrid Controls
- QuikConnect (Plug & Play) installation, supplied complete with:
 - Water supply hose
 - Detergent and rinse aid pumps with injector lines
 - Drain pump with outlet hose
 - 15 amp plugset
 - No commissioning required
- Heavy-duty stainless steel construction and wash manifold
- Upper and lower wash/rinse arms with precision moulded jets
- Easy-clean composite wash filter
- Watermark approved backflow prevention
- Comprehensive 5-2-1 warranty

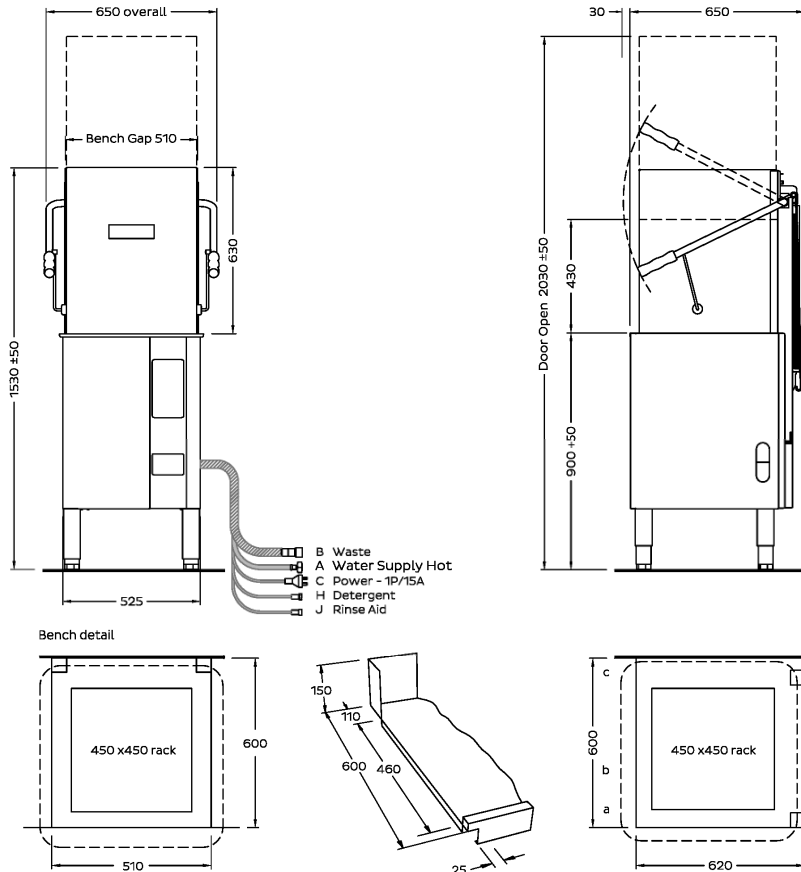
Includes:

- 2 x 450mm dish rack (600 70081)
- 1 x 450mm cup rack (600 70080)
- 1 x cutlery container (C660503)



XM

Economy Compact Passthrough Dishwasher – 450mm rack
W 650mm x D 650mm x H 1530mm



Australia
Moffat Pty Limited

Victoria/Tasmania
740 Springvale Road
Mulgrave, Victoria 3170
Telephone 03-9518 3888
Facsimile 03-9158 3833
vsales@moffat.com.au

New South Wales
Telephone 02-8833 4111
nswsales@moffat.com.au

South Australia
Telephone 03-9518 3888
vsales@moffat.com.au

Queensland
Telephone 07-3630 8600
qldsals@moffat.com.au

Western Australia
Telephone 08-9202 6820
wasales@moffat.com.au



ISO9001
All Washtech products are designed and manufactured by Washtech using the internationally recognised ISO9001 quality management system, covering design, manufacture and final inspection, ensuring consistent high quality at all times.

In line with policy to continually develop and improve its products, Washtech reserves the right to change specifications and design without notice.



© Copyright Moffat Ltd
Version: 1903

A Hot water	Temperature	65°C		
	Connection	3/4" male; hose supplied		
	Pressure	200-350kPa		
	Flow	20 litres per min		
	Quality	Potable - refer table		
	Backflow Prevention	Atmospheric Vacuum Breaker		
	Consumption	2.2 litres per cycle*		
B Waste	Connection	Hose supplied for 38mm open standpipe 750mm high or connection to sink trap		
C Electrical	V	Hz	A/phase	max kW
Single Phase	240	50	15	3.37

Dimensions	Machine	Packed
Width	650	695
Depth	650	750
Height	1530	1440
Weight	73	94
Cubicmetres		0.77

Water Quality	Min	Max
pH	7	8
Hardness ppm	20	100
Cl ⁻		100
SO ₄		400
Fe		0.1
Mn		0.5
Cu		0.05
Cl ₂		0.1

Corner Installation Notes:

- Machine must face left for easy access to controls
- Allow 300 clearance to front for service access
- Splashback return must be no higher than 150

Refer operator manual for installation instructions. Isolating switch must be within 1m of, and not directly behind the machine.

*Consumption may vary with site conditions.

an Ali Group Company



The Spirit of Excellence